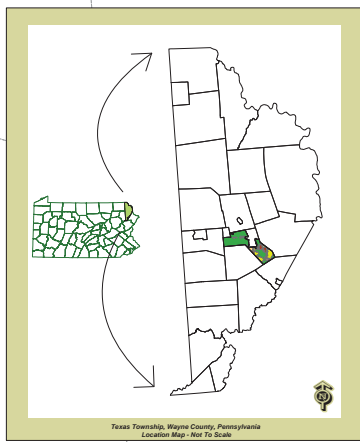
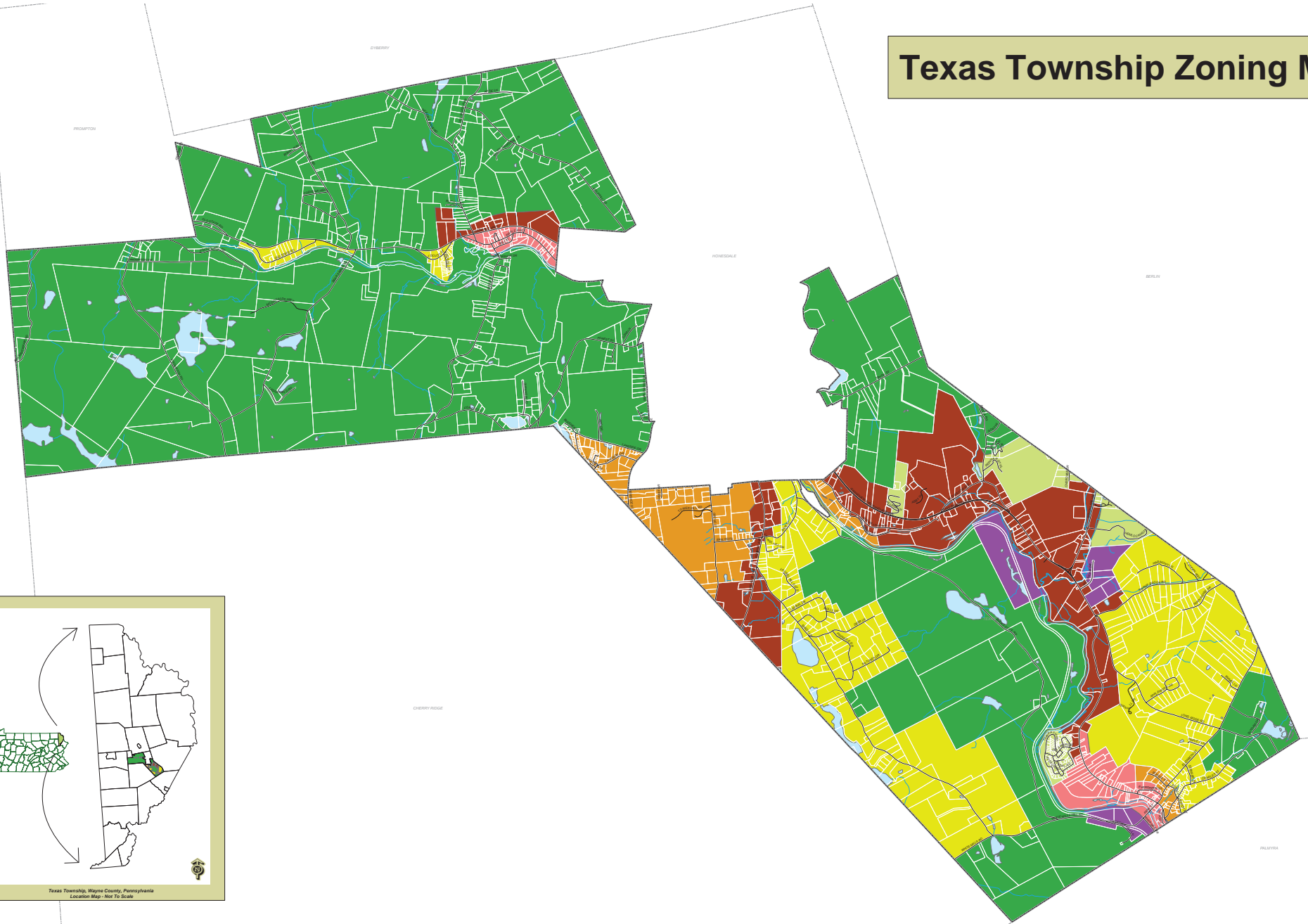


# Texas Township Zoning Map



Texas Township Supervisors - Adoption Block		
Date Adopted by Texas Township Supervisors -		
Supervisor Signature	Supervisor Signature	Supervisor Signature
Attest:		Date:
<small>Zoning map information compiled from Texas Township Zoning Map adopted March 21, 1994 and amended on December 20, 1999, June 13, 2005 and November 7, 2011. This zoning map was last amended in 2012 to add an amendment from November 16, 2009 that was approved by the Texas Township Supervisors but was never incorporated on the map.</small>		
<small>Parcel line data obtained from Wayne County Tax Assessment Office</small>		

**\* Note:** Along with the other General Districts there is also an additional floodplain classification. (See Article IV, Section 410 in the Texas Township Zoning Ordinance.)

0 1,000 2,000 4,000 6,000 Feet

1 inch equals 1000 feet

## Texas Township Zoning Map

Texas Township, Wayne County, Pennsylvania

This map was prepared by the Wayne County Department of Planning - March, 2012

General Features		Zoning Districts	
Roads	Watercourses	RU  Rural	C-1  General Commercial
Parcels	Waterbodies	R-1  Low-Density Residential	C-2  Highway Commercial
Texas Township Boundary	Municipal Boundaries	R-2  Multi-Family Residential	ID  Industrial
		R-3  Residential - Mobile Home Parks	